

## XH120 Laser Scanner

3D Handheld  
Laser Scanner



# XH120

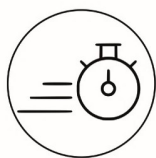
Fast &  
Efficient

XH120 is an handheld laser scanner based on newest STONEX SLAM technology.

This powerful scanner allows easy and fast capture of 3D models indoor & outdoor eliminating the need of collecting tens of scans from various stations and of complex multi-cloud registrations.

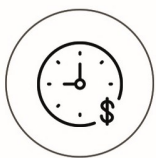
Just move around the scene with XH120 and see the point cloud growing as more data is added in real time.

Boost your productivity reducing on site capturing time and post processing workload.



## RAPID SCANNING

No more multiple scan stations, just move around the scene and collect in minutes the entire 3D point cloud.



## REDUCED WORKLOAD

No more tedious and time-consuming cloud to cloud alignment, download the full data right after the capture.



## STONEX SLAM TECHNOLOGY

Best in class sensors and real time processing: more range, more speed, more resolution, greater field of view, more reliability.



## FLEXIBILITY

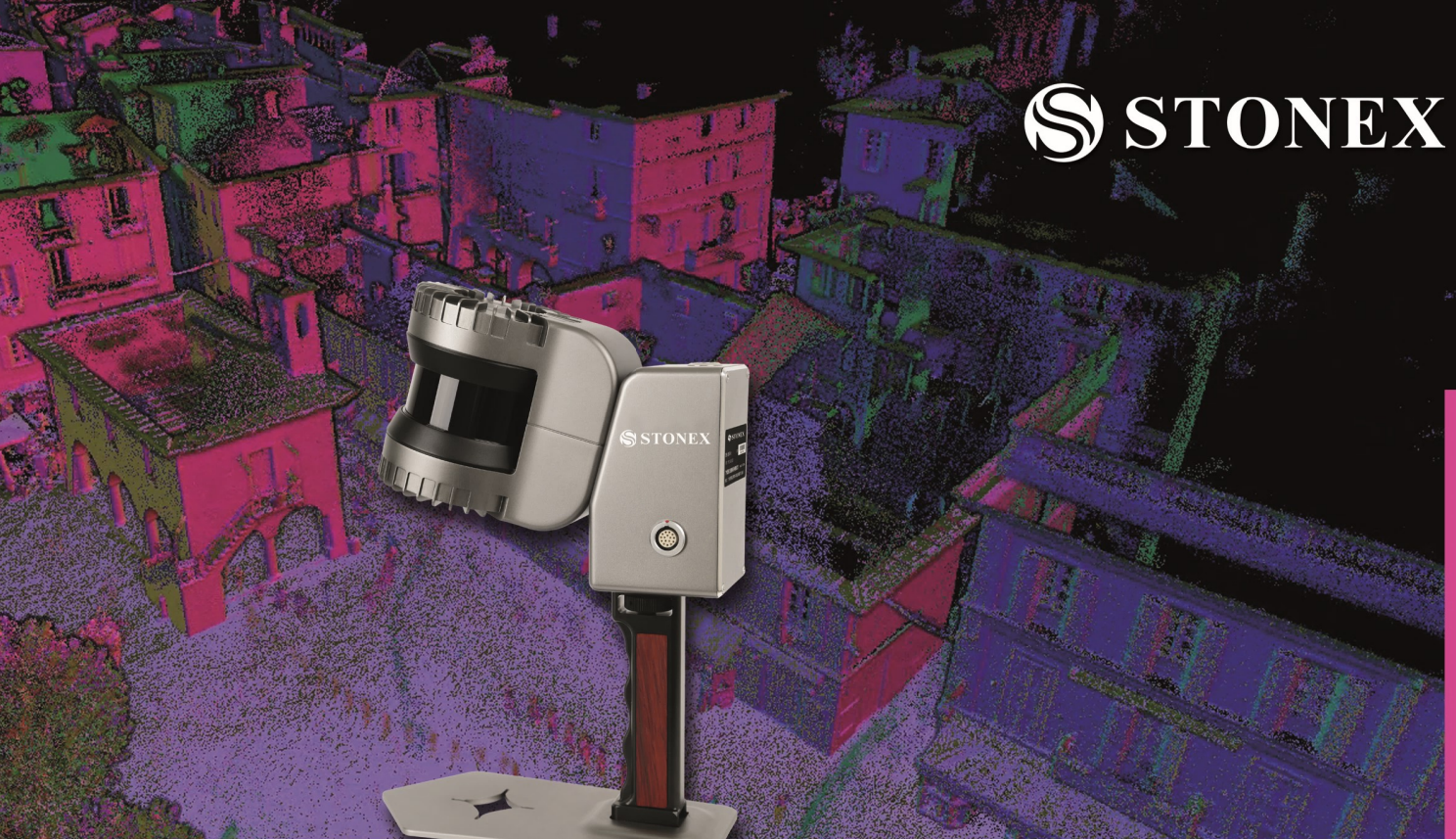
Combine indoor & outdoor data, even in the most demanding environments.



## REAL TIME

See your scanning progress in real time and control XH120 with your tablet or smartphone.

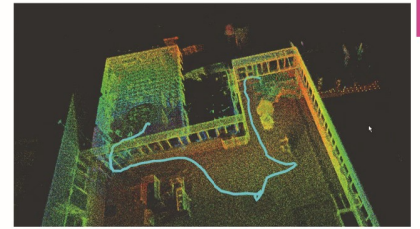




## SLAM TECHNOLOGY

### Simultaneous Localization And Mapping

STONEX SLAM technology delivers more range, more points per second and best in class on board processing algorithms to reach unmatched speed of capture and reliability even in the more demanding environments.



## 3D SOFTWARE

### STONEX 3D RECONSTRUCTOR

#### Powerful and usable 3D Software

The Stonex Reconstructor software allows you to manage and align point clouds acquired through laser scanners or other sensors, clouds produced by photogrammetry and in general any point cloud.

Complete and clear workflows will guide you during the processing and the expandable modules are able to meet different needs, covering many fields, such as: surveying, mining, construction, architecture, cultural heritage, BIM, galleries



#### Easy to use and versatile Software

Cube-scan is part of Stonex Cube-suite.

Easy to use and learn, it allows basic 3D workflows. Import point clouds from Stonex scanner or different sensors and clean them through selection tools. Aligns the point clouds by choosing from a variety of registration modes. Export registered point clouds to work with your own software or process measures, contour lines, edges and orthophotos.



# XH120 TECHNICAL FEATURES

## PERFORMANCE

Max Range	120 m
Scan speed	655.360 points/s
Range accuracy	± 3 cm
Precision	± 0.7 - 5cm
Range resolution	0.3 cm
Vertical resolution	32 channels
Field of view	Horizontal: 360° Vertical: 45°
N° of returns	1 (strongest)
Rotation rate	20 Hz
Angular Sampling Accuracy	Vertical: ±0.01° Horizontal: ±0.01°
Safety	Class 1 (eyesafe) laser

## SYSTEM

Memory	500GB (expandable)
--------	--------------------

## ELECTRICAL SPECIFICATION

Power Supply	DC 18-36V/40W
Operating time	4 hours (single battery)

## PHYSICAL SPECIFICATION

Scanner weight	2 kg
Processing unit weight	1.7 kg
Operating temperature	0° C to +50° C (32° F to 122° F)
Waterproof/Dustproof	IP54
Material	Aircraft grade aluminium

Suggested control Tablet:

SRT10W - 10" Windows Tablet



Illustrations, descriptions and technical specifications are not binding and may change

STONEX AUTHORIZED DEALER



**STONEX®**  
Part of **UniStrong**

Viale dell'Industria 53 - 20037 Paderno Dugnano (MI) - Italy  
Phone +39 02 78619201  
www.stonex.it | info@stonex.it